

Quick Start - Link to Gallagher W810

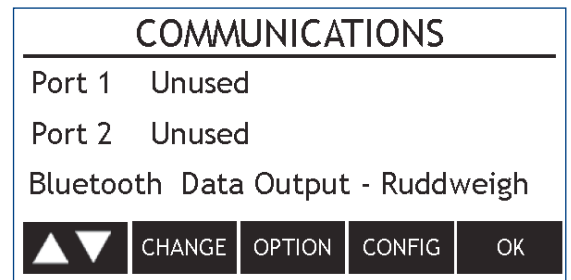
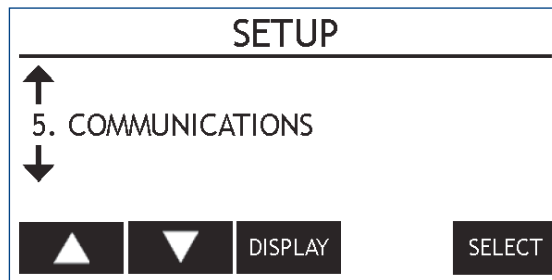
QS

Gallagher W810v2

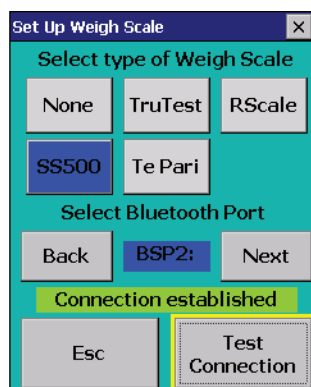
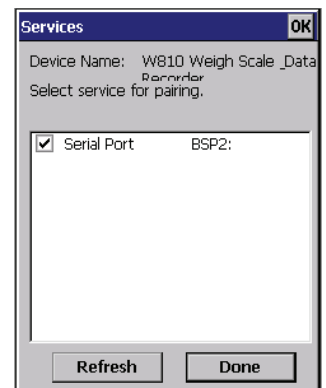
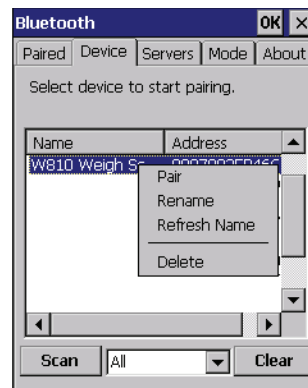
- ▷ links to the Shearwell stock recorder - pairing code 0000
- ▷ links to SDL440 blue stick reader - no pairing code
- ▷ Does **NOT** link to SDL400 red stick reader.
- ▷ Weigher does not display the entire EID number, just the last 4 digits.

Link to a stock recorder

- » On the W810 weigher, set the mode select dial to **S** (for set up).
- » Use the soft keys to select #5 - **Communications**.
- » Ignore Port 1 and Port 2 or set them to Unused.
- » Select **Bluetooth**. Press the **CHANGE** key to select **Data Output**.
- » Press the soft key under **OPTION** to select **Ruddweigh**.
- » Press the soft key under **OK** to save and exit.
- » Set the mode select dial to A or M to start weighing.



- » On the stock recorder - open the Bluetooth Manager
- » **Scan** to locate the signal from the weigher.
- » Highlight **W810 Weigh Scale and Data Recorder** and tap **Pair**. On the Authentication screen enter the passcode 0000. Tap **Next**.
- » Choose a BSP port and tap **Done**.



- » In FarmWorks, go to **Options > Weigher**
- » Select **SS500**. Use the buttons to select the correct BSP port.
- » Test the connection.
- » Escape to sheep or cattle procedures to start weighing.

Quick Start - Link to Gallagher W810

QS

Link to blue (SDL440) stick reader

- » On the W810 weigher, set the mode select dial to **S** (for set up).
- » Use the soft keys to select #5 - **Communications**.
- » Ignore Port 1 and Port 2 or set them to Unused.
- » Select **Bluetooth**. Press the soft key under **CHANGE** to select **EID Reader**.
- » Press the soft key under **OPTION** to select **Standard**.

SETUP	
↑	5. COMMUNICATIONS
↓	
▲	▼
DISPLAY	SELECT

COMMUNICATIONS	
Port 1	Unused
Port 2	Unused
Bluetooth EID Reader - Standard	
▲	▼
CHANGE	OPTION
CONFIG	OK

- » Press the soft key under **CONFIG**. Press the soft key under **BLUETOOTH**.
- » Make a note of the Bluetooth MAC address - you will need that number for SDL Connect.
- » Press **OK** to save and exit.
- » Set the mode select dial to A or M when you are ready to start weighing.
- » Press the soft key under **CONFIG**. Press the soft key under **BLUETOOTH**.
- » Make a note of the Bluetooth MAC address - you will need that number for SDL Connect.
- » Press **OK** to save and exit.
- » Set the mode select dial to A or M when you are ready to start weighing.

Configure : EID Reader - Standard	
BLUETOOTH	OK

BLUETOOTH SETTINGS	
Bluetooth MAC: 00:07:80:3e:b4:6c	
Paired: No Connection	
RESET	OK

- » Open **SDL Connect** on your computer and connect to your stick reader.
- » Click on **Configure Stick**.
- » Set the **EID Output Format** to **Decimal**.
- » Scroll down to find the **Weigher Bluetooth ID** field. Type in the Bluetooth ID number for your weigher. Click **Save Configuration** and **Quit**.
- » Turn on your stick reader by holding down the green button. Release the button when **Link to Weigher** appears. The blue light on the weigher and on the stick reader will glow when a Bluetooth link is made.
- » Scan an RFID tag with the stick reader. The last 4 digits of the EID number will be displayed on the screen.