

OWNER'S GUIDE



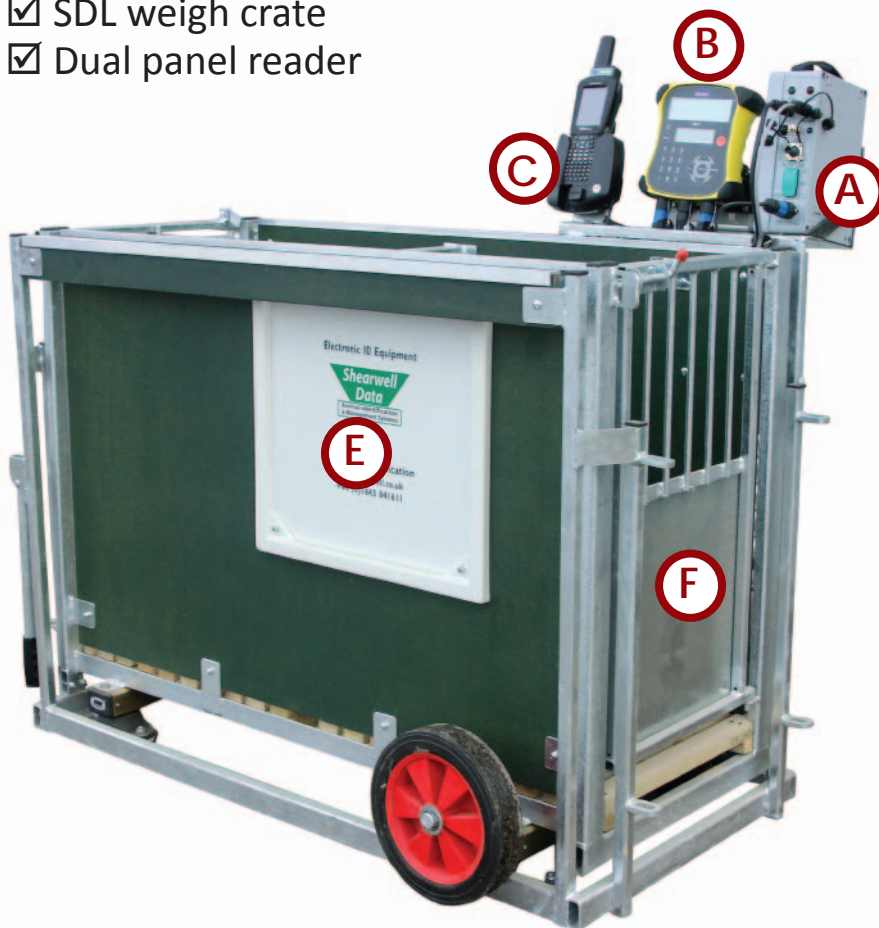
Shearwell Weigh Crate with Tru-Test EziWeigh7i



Thank you for purchasing a Shearwell EID weigh crate. This user manual will help you install and connect the components for safe, trouble-free operation. Please read through the instructions carefully before starting the installation process.

Supplied equipment

- ☑ SDL 130 - Intelligent Reader
- ☑ Tru-Test EZiWeigh7i weigh scale
- ☑ SDL weigh crate
- ☑ Dual panel reader



- A = SDL 130
- B = Tru-Test EziWeigh7i
- C = Stock recorder cradle
- D = Power box
- E = Dual panel reader
- F = OUT gate
- G = IN gate



Table of contents

Safety notice - Page 4
Pre-installation requirements - Page 4
Setting up the weigh crate - Page 5
Bluetooth connection to the panel reader - Page 8
Bluetooth connection to the Tru-Test weigher - Page 12
Operating the weigh crate - Page 17
Drafting by weight - Page 18
Trouble-shooting - Page 19
Contacting technical support - Page 20

Safety Notice

- 240V AC or 110V AC installation should be in accordance with current IEE wiring regulations.
- User is advised to provide suitable protection for the mains supply, such as RCD.
- The weight crate should be installed in a location protected from the weather.
- Only use the power cables supplied with the weigh crate.
- There are no operator serviceable parts inside the SDL 130 reader or the antennae.
- Do not remove the cover or expose the inside of the SDL 130 reader for any reason.
- Do not attempt to repair or replace any part of the reader or antennae.
- Do not allow the weigh crate or cables to stand in water.

Pre-installation requirements

Electrical requirements:

- » Mains power supply.

Environmental requirements:

- » The crate must be installed on firm, level ground to get accurate weights. Provide a solid base about 3.5 metres (12') long by 1.2 metres (4') wide. The area should be level from front to back, and from side to side. Weigh something with a known weight, like a bag of feed, to check for accuracy after installation.
- » The crate should be installed in a location protected from the weather. The electronic components (stock recorder, SDL 130 and the Tru-Test weigher) should be stored in a warm environment when not in use: connectors must have their covers and caps in place to keep out moisture.

EziWeigh7 or EziWeigh 7i?

Tru-Test produced two models of the EziWeigh 7 weigh head. The model name is in the centre of the front of the weigh head. The only difference between them is the passcode required to make a Bluetooth link.

- If you have an EziWeigh 7, there is NO passcode required to link to a stock recorder.

- If you have an EziWeigh 7i the passcode is 0000 to link to a stock recorder.



Setting up the crate

The three components of the SDL weighing system mount on the back of the crate and connect to the mains supply through the power box. The components must be connected and powered on before you can set up Bluetooth links to the stock recorder.

Stock recorder

- handheld computer
- FarmWorks software
- receives tag numbers and weights



SDL 130

- control box for the panel reader
- Bluetooth link to the stock recorder
- sends RFID tag numbers to stock recorder

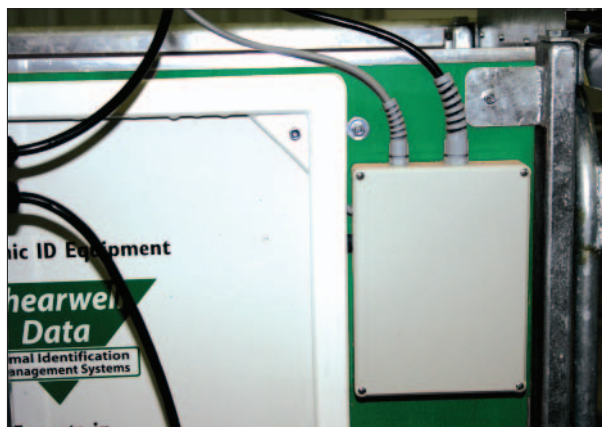
Tru-Test EziWeigh 7i weigh scale

- Bluetooth link to the stock recorder
- send weights to stock recorder

1. Set the SDL 130, the Tru-Test weigh scale and the stock recorder into their mounting brackets. Note the labels for the sockets on the power box.

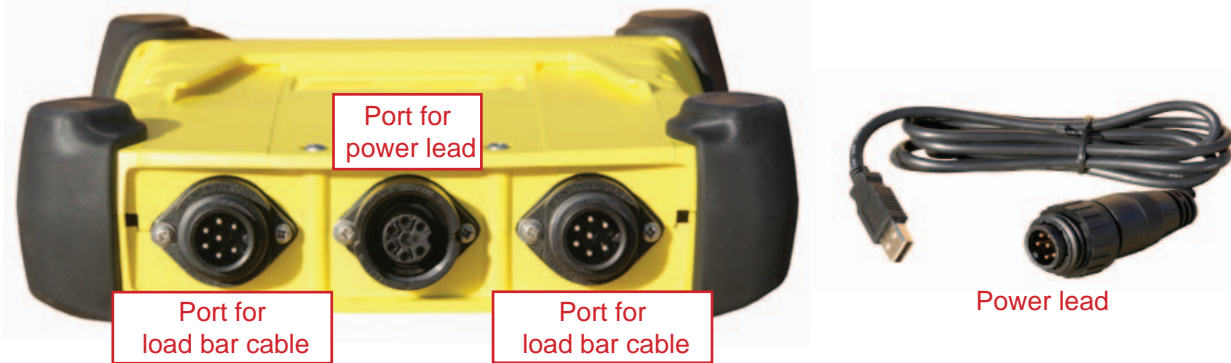


2. Connect the SDL 130. Two leads from the panel readers plug into the front sockets of the SDL 130.



The two top cords are from the panel reader box - one is grey and the other is black. They are male with different ends - one has five pins and the other has three pins. The two plate reader cords will not plug into any outlet except their own.

3. Connect the Tru-Test weigh scale. Attach the two blue leads and the black power lead to their ports on the bottom of the weigher. Plug the USB end of the power lead into its socket in the power box.



The heavy blue cables from the load bars have female ends that connect to the two outer ports on the bottom of the weigher. The power cable is black with a male end that connects to the centre port on the bottom of the weigher and the other end is a USB connector that plugs into the power box.

4. Connect the lead from the stock recorder cradle to the power box.



5. Connect the SDL 130 in the appropriate socket in the power box.

6. Connect the mains cable to the correct outlet in the power box.



7. Plug the other end of the mains cable into the mains supply. Switch on the power supply.

8. On the SDL 130 push the rocker switch to the on position. The red light comes on and stays on. The green light will flash once and go off.

9. Turn on the Tru-Test weigher by pushing the power button once. The weigh crate should now be fully powered on and ready to work. Start FarmWorks on the stock recorder. Turn to page 7 for the instructions for establishing Bluetooth links with the different components.



Bluetooth connection to the SDL130 Dual Panel Reader



A = SDL 130
B = Panel reader

Connecting the SDL 130

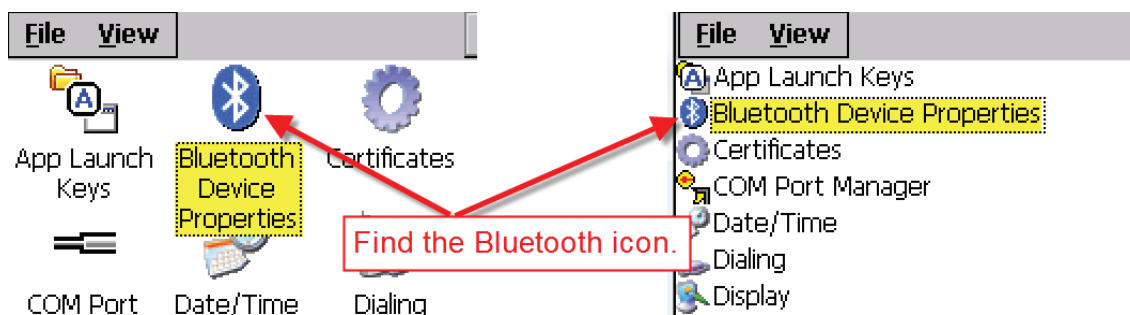
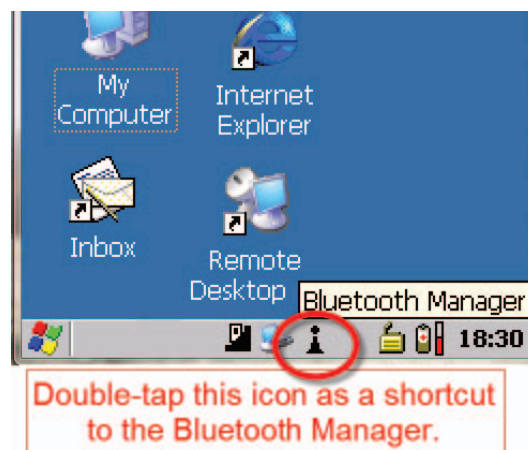
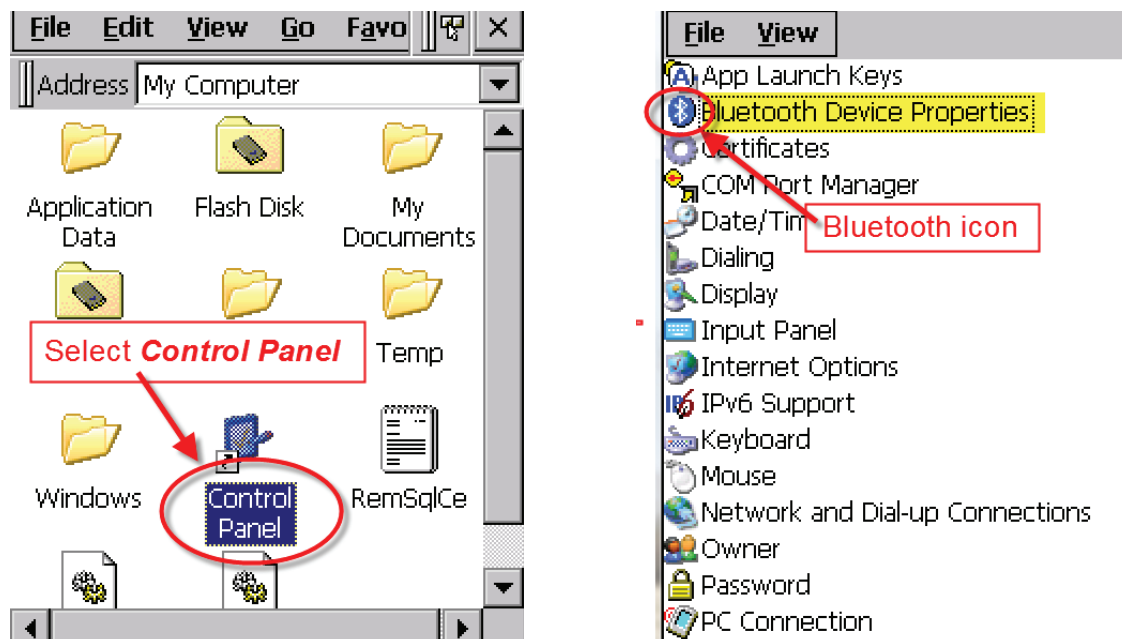
1. Connect the SDL 130 to the panel reader (see Page 5)
2. Connect the power cord.
3. Push the rocker switch to the on position.
4. The red light comes on and stays on. The green light will flash once and go off.



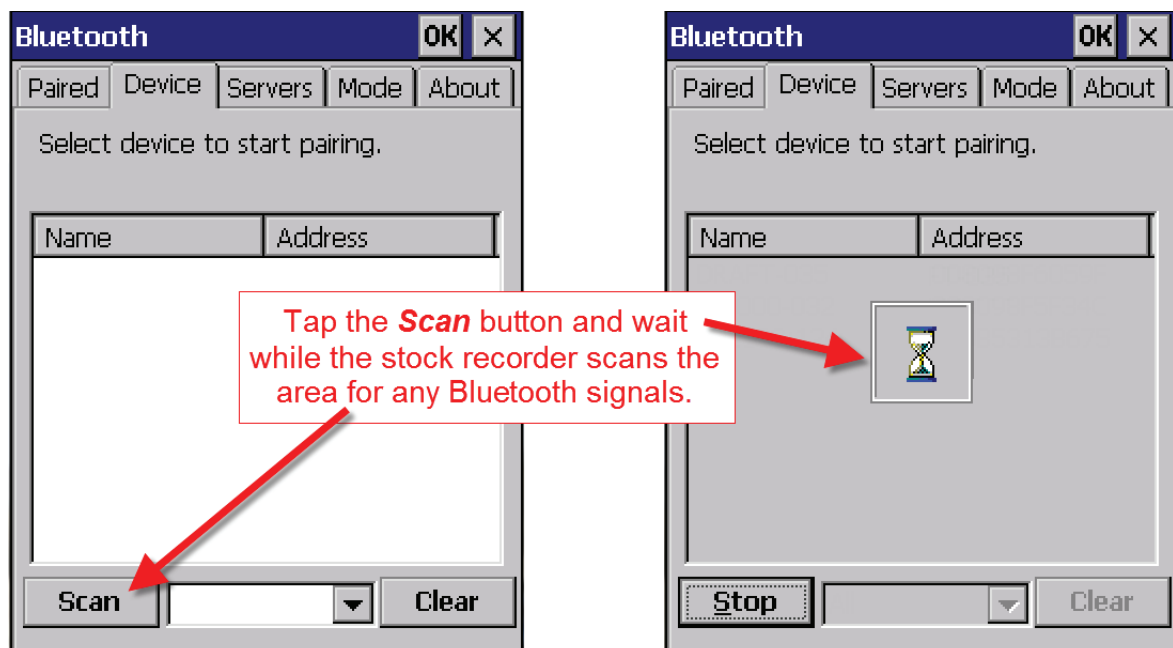
Pairing the stock recorder with the SDL 130 panel reader

** If the Bluetooth Manager on your stock recorder looks different than what is pictured here you might have an older version - see the appendices at the back of this guide to find the right procedure.*

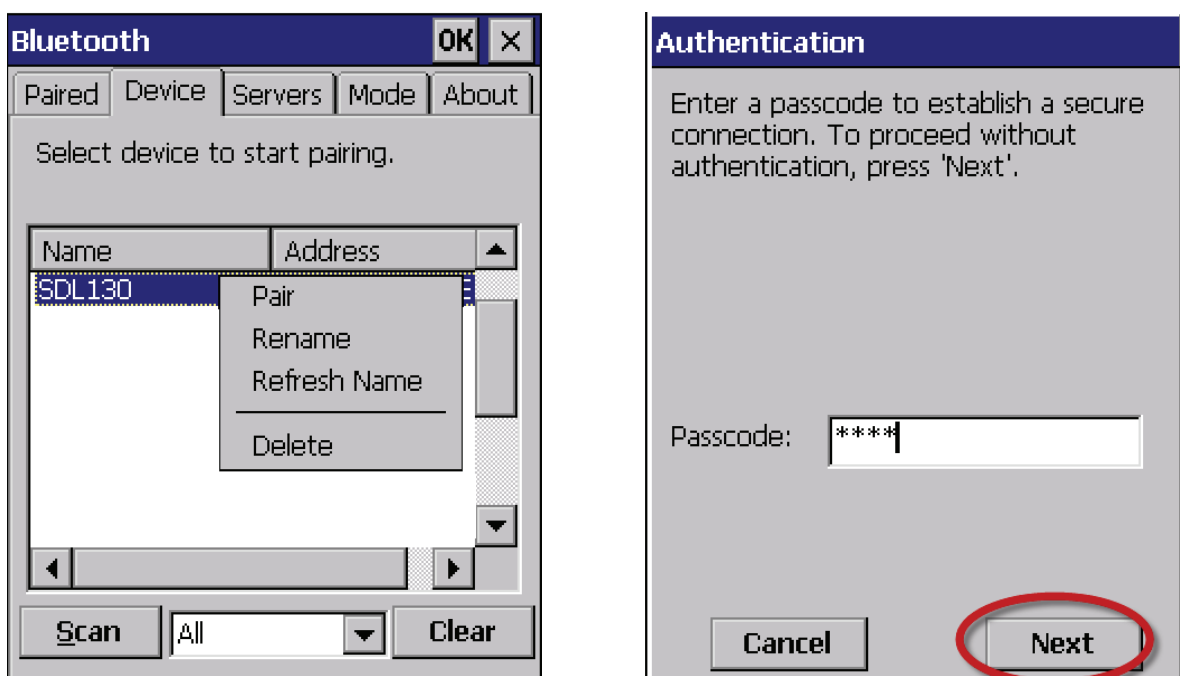
1. Turn on the SDL 130 you are trying to link to the stock recorder. Make sure it is close by.
2. On the stock recorder desktop find the computer icon. It may be called **My Device** or **My Computer**. Double tap the icon to open it.
3. A shortcut to the Bluetooth Manager is to tap the BT icon on the bottom taskbar.
4. Open **Control Panel**.
5. Find the Bluetooth symbol. It may be an icon or it may be in a list of folders. Double-tap to open **Bluetooth Device Properties**.



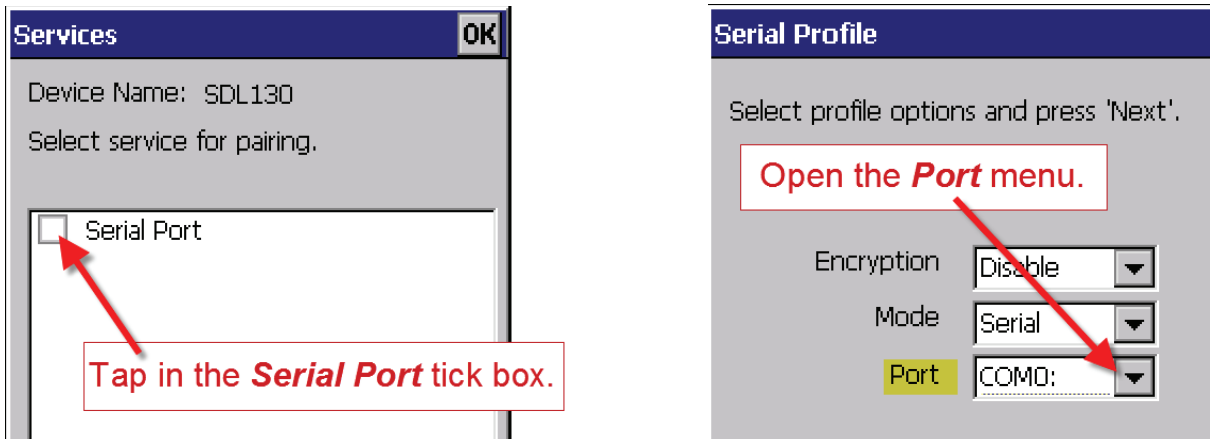
6. On the devices tab press **Scan**. Now the stock recorder tries to find all the Bluetooth devices in the area. This may take a few minutes - be patient!



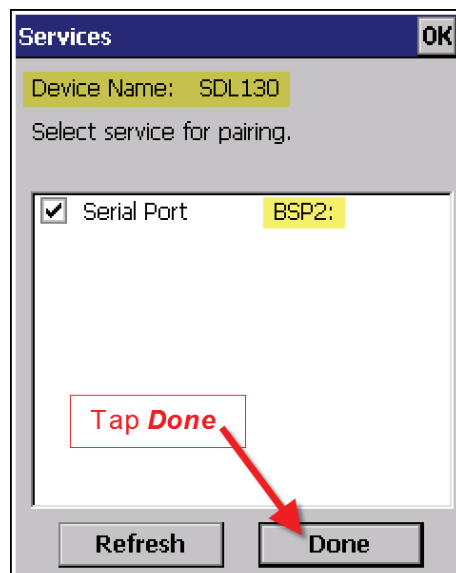
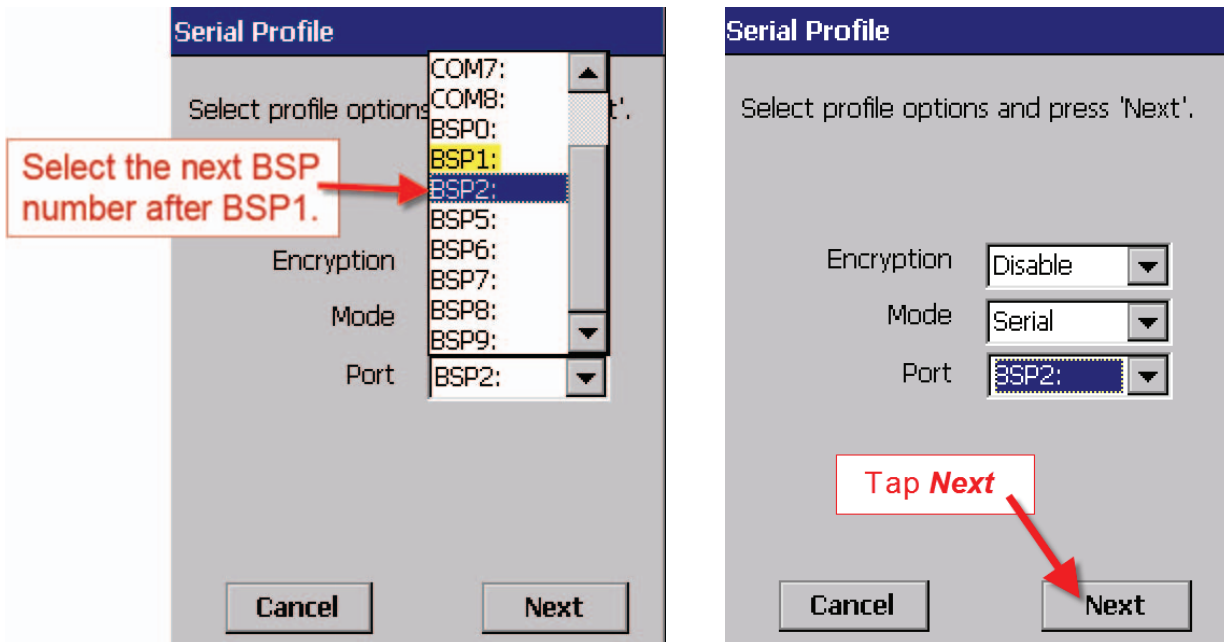
7. When scanning is complete the screen will show all the Bluetooth devices in the area, including mobile phones.
8. Highlight **SDL130** and tap **Pair**.
9. The Authentication screen opens. All Shearwell products use 1111 as the default PIN. Type in the PIN and tap **Next**.



1. The **Services** screen will open. Tap in the **Serial Port** tick box.
2. The **Serial Profile** screen will open. Leave **Encryption** disabled. Leave **Mode** as serial.

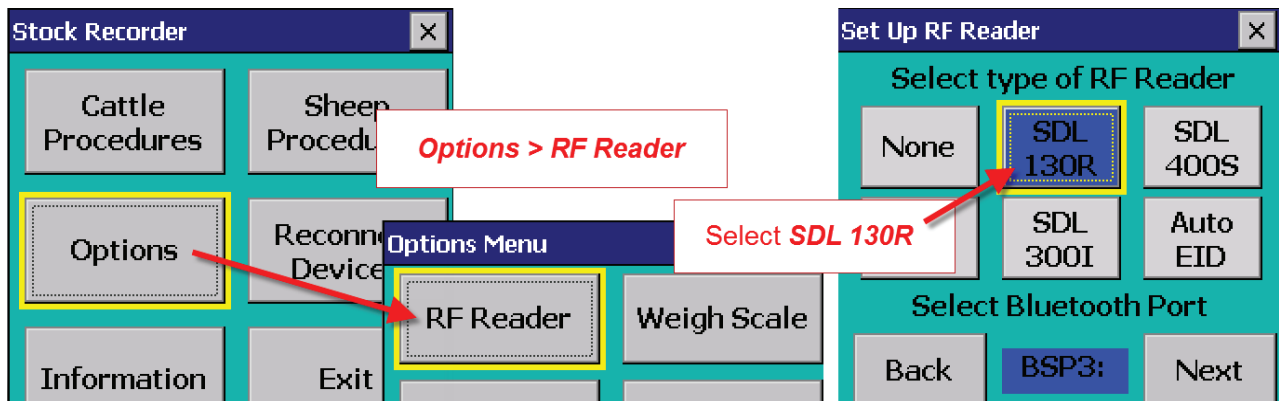


3. Open the **Port** menu. On the list find the next available BSP after BSP 1. Make a note of the BSP number.
4. The Serial Profile screen opens again. Tap **Next**. On the Services screen tap **Done**.

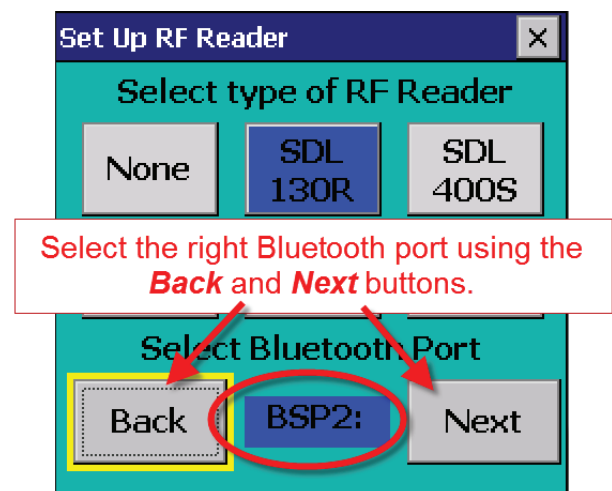


Set up FarmWorks on the stock recorder to receive tag numbers from the SDL 130

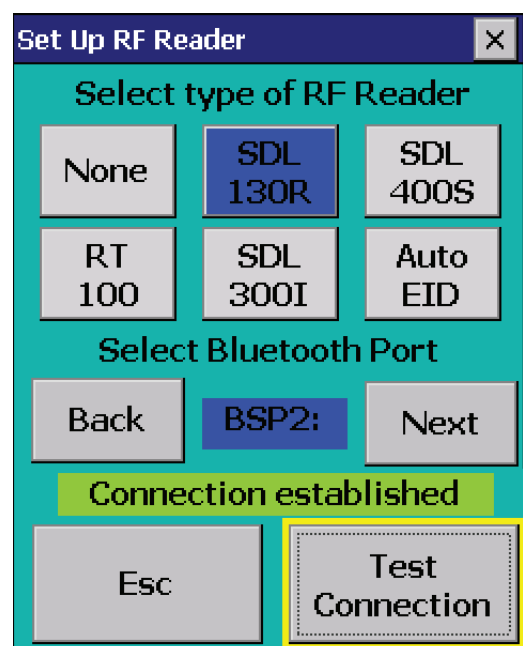
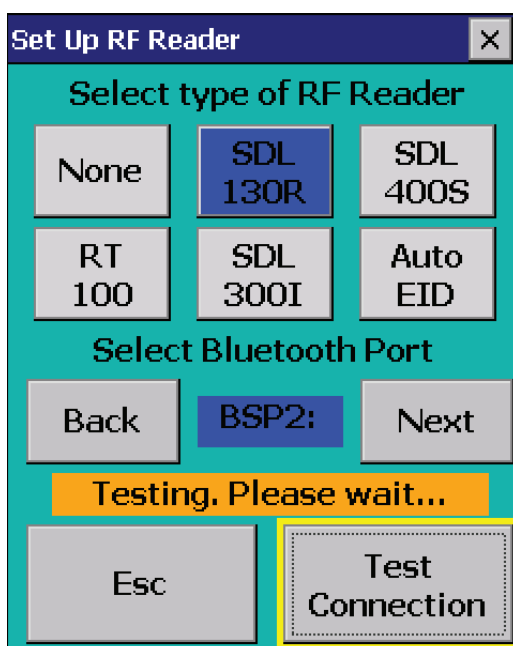
1. Open FarmWorks on the stock recorder.
2. Select **Options**, then **RF Reader**.
3. Select **SDL 130R**.



4. Select the correct Bluetooth port number - the BSP number from the Bluetooth Manager. Click backwards and forwards using the **Back** and **Next** buttons until you find the right BSP number.



5. Click **Test Connection**.
6. The message **Connection Established** means the stock recorder and SDL 130 have been successfully connected.





Bluetooth connection to EziWeigh 7i weigh scale



A = EziWeigh 7i weigh scale

Connecting the EziWeigh 7i

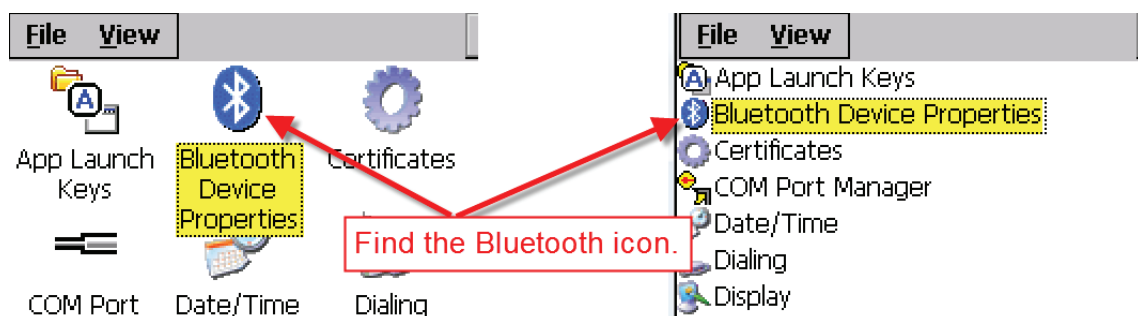
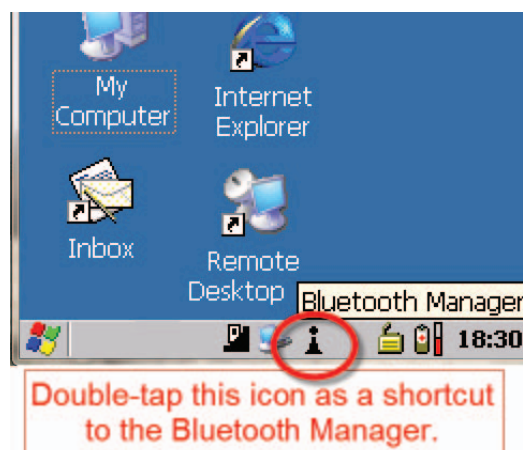
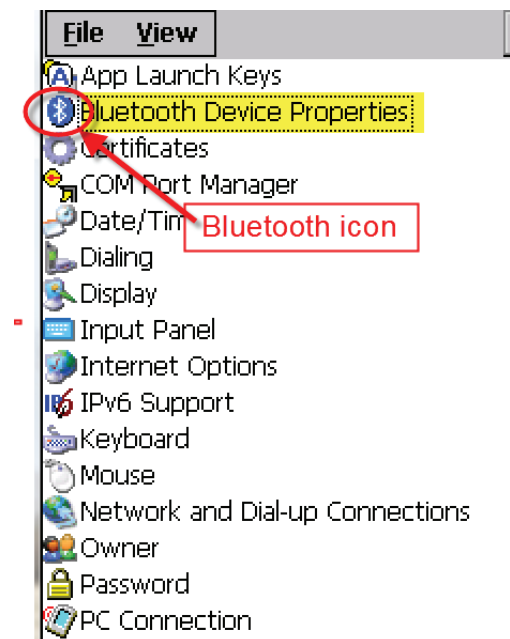
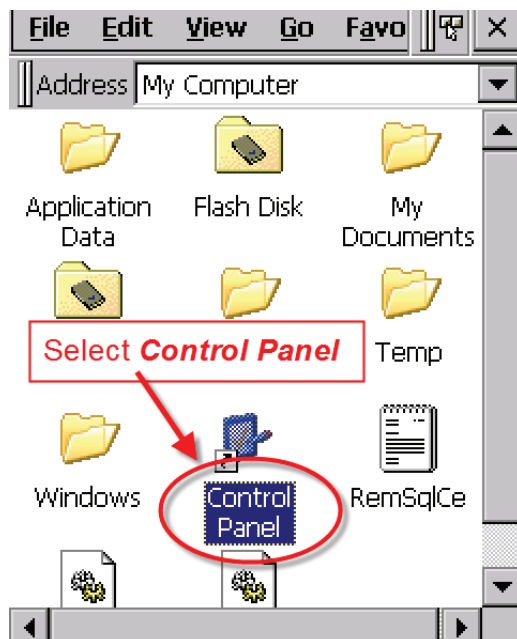
1. Connect the two blue cables and the power lead to the ports on the bottom of the weigh scale. See page 6.
2. Switch it on by pushing the power button.



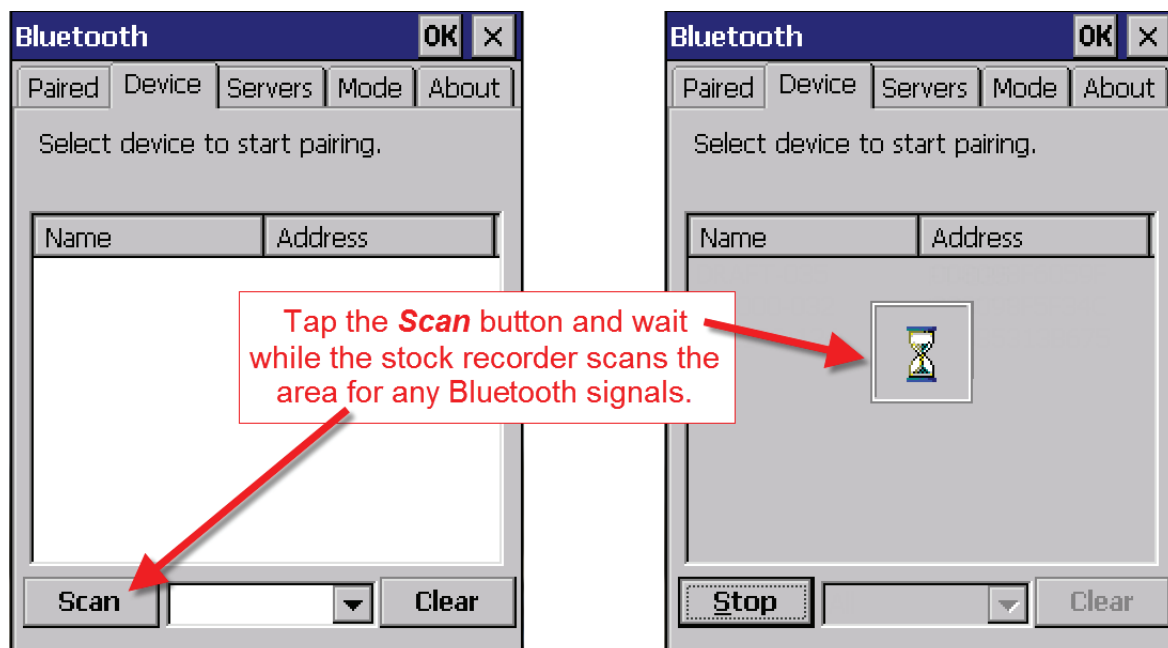
Pairing the stock recorder with the Tru-Test EziWeigh 7i

** If the Bluetooth Manager on your stock recorder looks different than what is pictured here you might have an older version - see the appendices at the back of this guide to find the right procedure.*

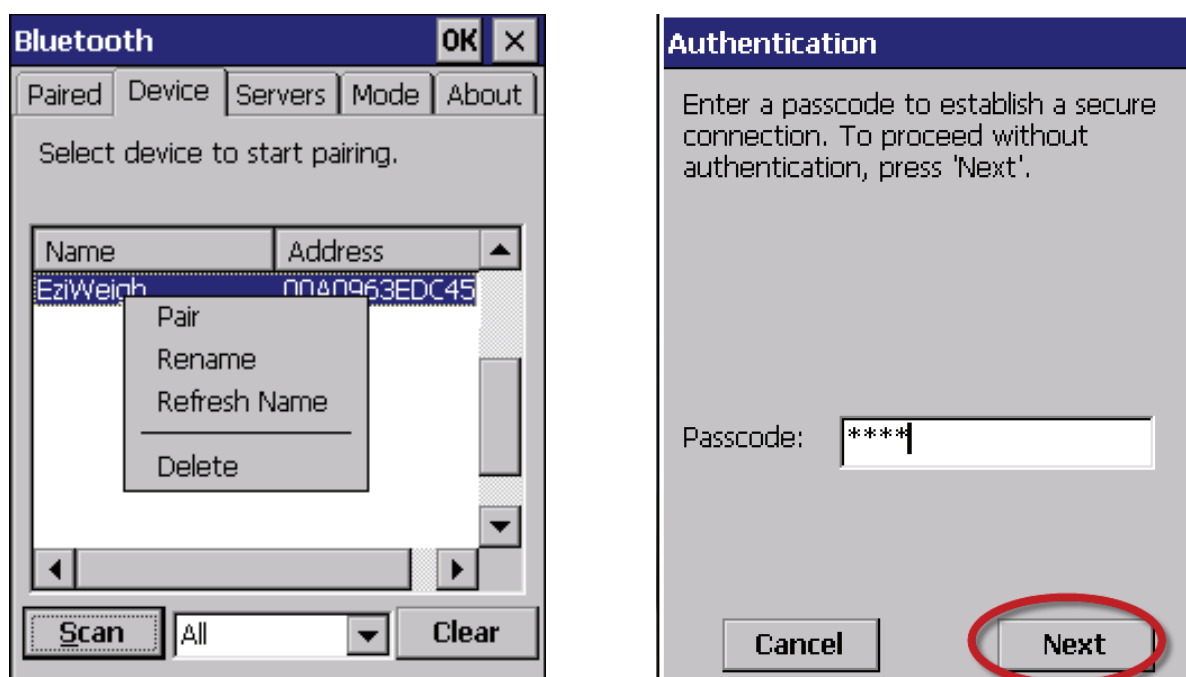
1. Turn on the weigh scale you are trying to link to the stock recorder. Make sure it is close by.
2. On the stock recorder desktop find the computer icon. It may be called **My Device** or **My Computer**. Double tap the icon to open it.
3. A shortcut to the Bluetooth Manager is to tap the BT icon on the bottom taskbar.
4. Open **Control Panel**.
5. Find the Bluetooth symbol. It may be an icon or it may be in a list of folders. Double-tap to open **Bluetooth Device Properties**.



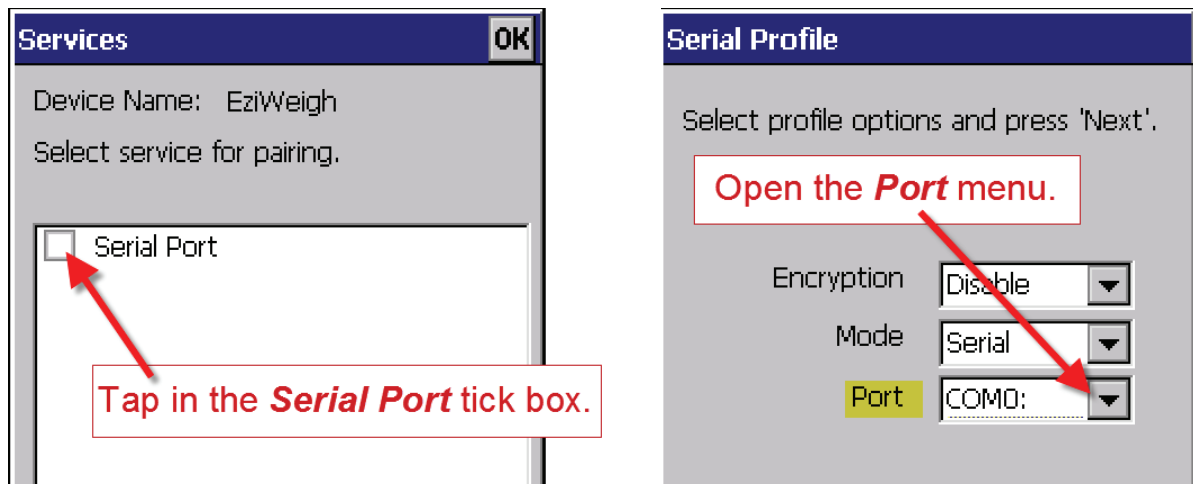
6. On the devices tab press **Scan**. Now the stock recorder tries to find all the Bluetooth devices in the area. This may take a few minutes - be patient!



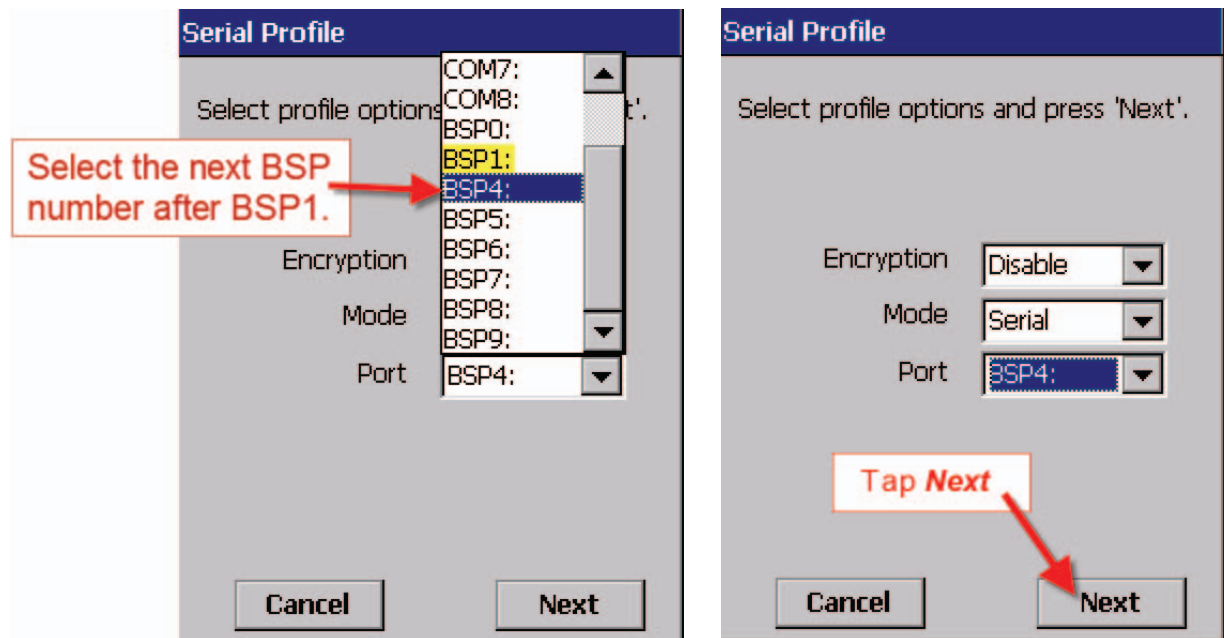
7. When scanning is complete the screen will show all the Bluetooth devices in the area, including mobile phones.
8. Highlight the EziWeigh and tap **Pair**. The Authentication screen opens. Type in the PIN **0000** and tap **Next**.



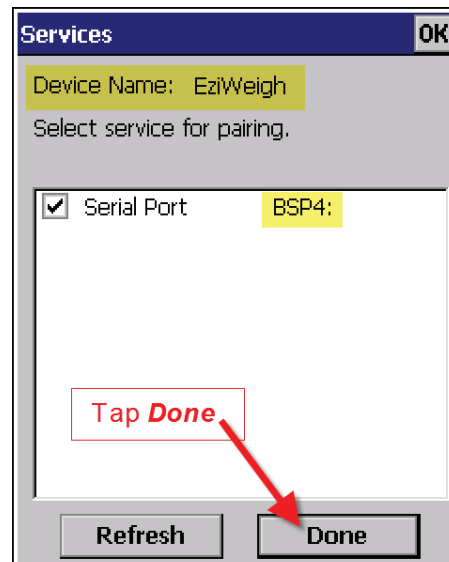
9. The **Services** screen will open. Tap in the **Serial Port** tick box.
10. The **Serial Profile** screen will open. Leave **Encryption** disabled. Leave **Mode** as serial.



11. Open the **Port** menu. Find the next available BSP after BSP 1. Make a note of the BSP number.

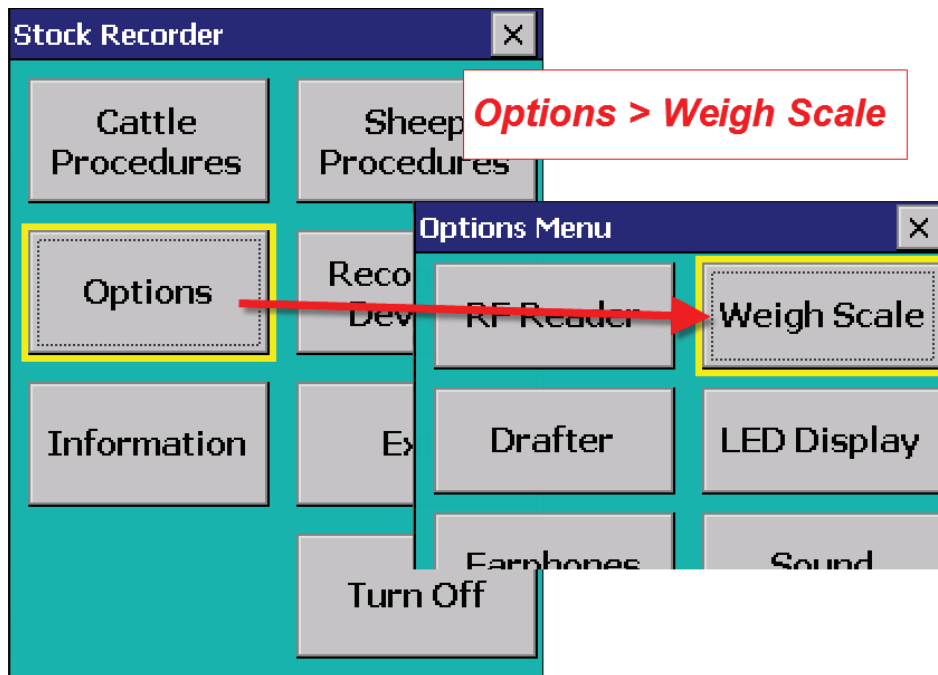


12. The Serial Profile screen opens again. Tap **Next**. On the Services screen tap **Done**.

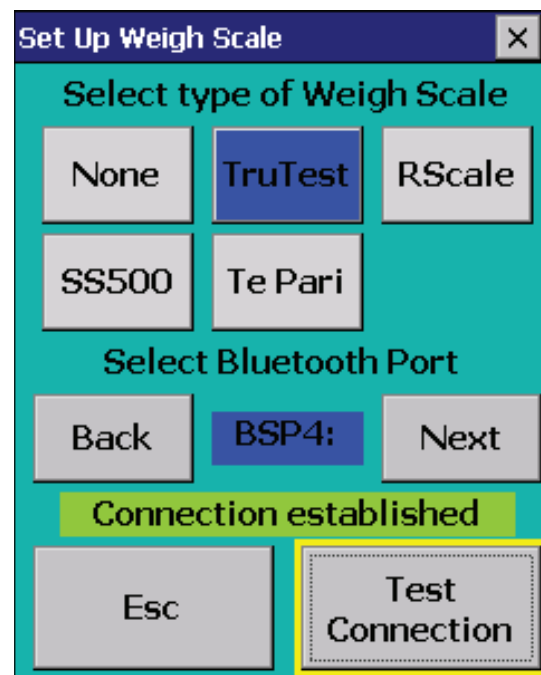
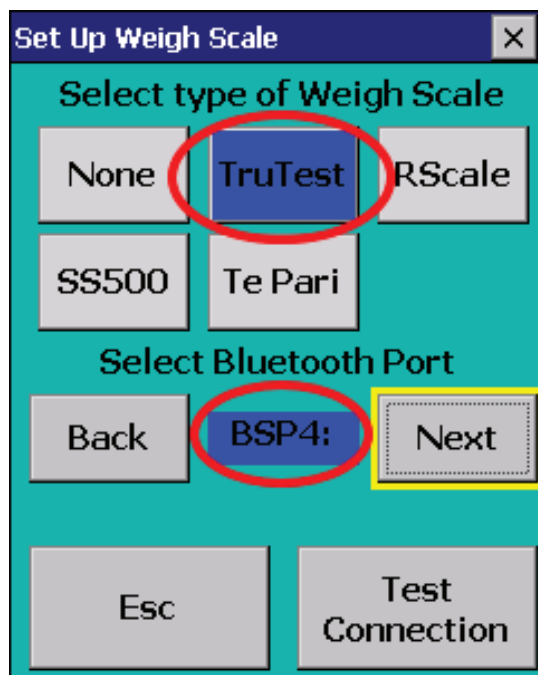


Set up FarmWorks on the stock recorder to receive weights from the EziWeigh 7i

1. Open FarmWorks on the stock recorder.
2. Select **Options**, then **Weigh Scale**.



3. Select **Tru-Test**
4. Select the correct Bluetooth port number - the BSP number from the Bluetooth Manager.
5. Click backwards and forwards using the **Back** and **Next** buttons until you find the right BSP number.



6. Tap **Test Connection**. The message **Connection Established** means the stock recorder and your Tru-Test EziWeigh 7i have been successfully connected.

Weigh animals

Read the instructions for setting up the Bluetooth connections before starting. This section deals with the actual operation of the crate after the initial installation.

1. Open FarmWorks on the stock recorder.
2. Press **Reconnect Devices**.
3. Press **Yes** for the SDI 130 and JR3000.
4. Press **Connect**. Wait for Bluetooth connections.
5. Continue to **Sheep Procedures**, then **Weighing**.

Weighing Options

Weigh Only / Weaning Weight / 20 Week Weight

1. Select a weigh option.
2. Open the IN gate for the first sheep to enter the crate.
3. The EID tag number (sent from the SDL 130) will appear in the **Tag** field.
4. The weigher might take a few seconds to find a stable weight, depending on its damp settings. That weight will appear in the **Weight** field.
5. The daily live weight gain and weight history showing the most recent weights will be displayed.
6. The stock recorder automatically saves the record - you do not have to press Save for each animal.
7. Open the OUT gate to let that sheep exit. Open the IN gate for the next sheep to enter.

8 Week Weight

1. Open the IN gate for the first lamb to enter the crate.
2. The EID tag number (sent from the SDL 130) will appear in the **Tag** field.
3. The weight will appear in the **Weight** field.
4. The stock recorder automatically saves the record - you do not have to press **Save** for each animal.
5. The date of birth, dam, breed and sex of the lamb will be displayed.
6. If necessary use the **Correct Details** option to change the date of birth, sex or breed. Press **Save**.
7. Open the OUT gate to let that lamb exit. Open the IN gate for the next lamb to enter.

Weigh & Score

1. Open the IN gate for the first sheep to enter the crate.
2. The EID tag number (sent from the SDL 130) will appear in the **Tag** field.
3. The weight will appear in the **Weight** field.
4. Enter a condition score between 0.00 and 10.00.
5. The last weight and condition score will be displayed. Press **Save**.
6. Open the OUT gate to let that sheep exit. Open the IN gate for the next sheep to enter.

Weigh & Grade

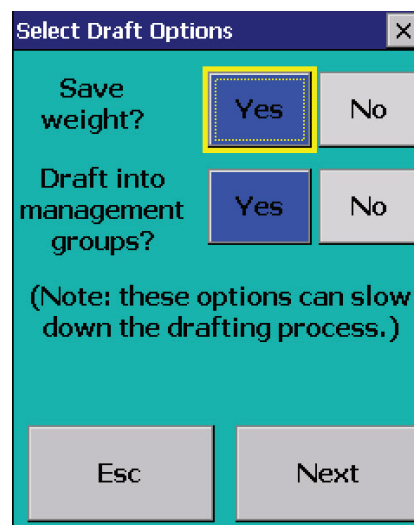
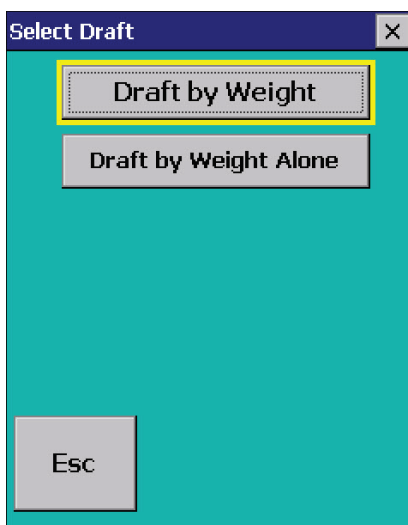
1. Open the IN gate for the first sheep to enter the crate.
2. The EID tag number (sent from the SDL 130) will appear in the **Tag** field.
3. The weight will appear in the **Weight** field.
4. Tap **Grade** and select a fat grade from the chart.
5. The last weight and grade will be displayed. Press **Save**.
6. Open the OUT gate to let that sheep exit. Open the IN gate for the next sheep to enter.

Draft by weight

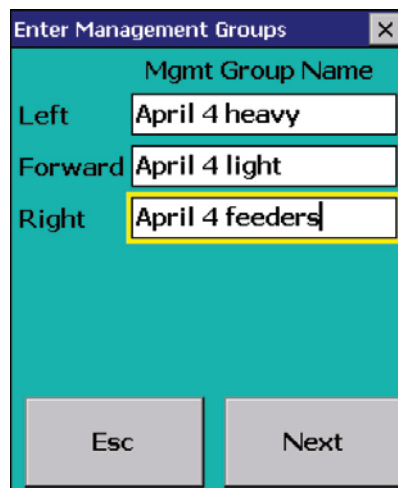
If you have a manual drafting system you can use the Draft by Weight function on the stock recorder to separate sheep into three weight groups.

This function reads the EID tag and records a weight against each animal then shows options to draft three ways (left, right or straight ahead), depending on the animal's weight. The three directions can also be named as management groups, which will be imported into FarmWorks at the next data transfer.

1. On the stock recorder go to **Sheep Procedures > Drafting**.
2. Select **Draft by Weight**.
3. You can choose to save the weight of each animal - Yes or No.
4. You can choose to save the drafted animals into management groups - Yes or No. Tap **Next**.



5. Set the weight parameters and select the gates - Left (L), Right (R) or Forward (F). Tap **Next**.
6. If you chose to save into management groups then you must type in a name for each group. Make unique names that will be easy to find in FarmWorks. Tap **Next**.
7. Open the back gate for the first sheep to enter.
8. The EID number will appear in the **Tag** field, the weight will appear, and an arrow shows the direction to draft, depending on the weight.



Trouble-shooting Guide

Problems with Bluetooth

- ▶ If the stock recorder was switched off, in sleep mode or was moved out of range then it will lose the Bluetooth connections.
 - Make sure the stock recorder is powered on and in range. Press **Reconnect Devices**.
- ▶ Failing to connect can be a result of Bluetooth ports that are cross-linked.
 - Check your Quick Connect guide for the correct BSP port numbers.
 - Go to **Options** to check that the BSP port for each device is correct and none are shared.
 - Test each connection.
- ▶ Check the Main Control box still has power (light is on).
- ▶ Check that all cords and plugs are secure. If the power supply fails for even a second the Bluetooth connections will be broken.
- ▶ If none of these resolve the problem switch everything off, disconnect the mains and take the stock recorder out of the cradle.
 - Reconnect the mains and turn everything back on again.
 - Do a warm reset of the stock recorder (**Windows** button at the bottom left, select **Shutdown**, then select **Warm Reset**). Wait for the stock recorder to reboot then open FarmWorks.
 - Try reconnecting through the **Options** screens on the stock recorder. Go to **RF Reader**, check for the correct BSP port
 - Press **Test Connection**.
 - Go to **Weigher**, check for correct BSP port.
 - Press **Test Connection**.

Stock recorder is not receiving tag numbers.

1. Check the SDL 130 is connected and powered on. (Is the red light on?)
2. Try a test tag. Does the green light flash?
3. Go to **Reconnect Devices** on the stock recorder. Select SDL 130R. Press **Connect**.
4. Check the stock recorder has the RF reader **SDL 130R** selected.
(**Options > RF Reader**)
5. Select the right Bluetooth port - BSP _____. (Check your Quick Connect guide.)
6. Switch off or remove other RF readers (stick readers, other panel readers, etc.)
7. Move radios, fans, laptops, etc. away if they could interfere with the Bluetooth signal.

Stock recorder is not receiving weights.

Note: The stock recorder waits for a tag number to come in from the SDL 130 first before it accepts a weight from the Tru-Test. If weights are not coming in from the Tru-Test, first check that the panel reader is working properly before you assume the problem is with the weigher.

1. Try a test tag. Does the tag number come up in the Tag field on the stock recorder? If not then reconnect the SDL 130 and try again.
2. If the test tag number is received by the stock recorder then go to **Reconnect Devices** on the stock recorder. Select Tru-Test. Press **Connect**.
2. Check the Tru-Test is connected and powered on.
3. Check the stock recorder has the weigh scale **Tru-Test** selected.
(**Options > Weigh Scale**)
4. Select the right Bluetooth port - BSP _____. (Check your Quick Connect guide.)

Contacting support



Technical support in the UK

Shearwell Data Ltd

Putham, Wheddon Cross

Minehead

Somerset TA24 7AS

Tel: 01643 841611

Fax: 01643 841628

Email: support@shearwell.co.uk