



# Quick Start Guide - Stock Recorder



The entire Stock Recorder user guide is on the installation CD you received. Installing FarmWorks automatically loads the user guide onto your computer - click on the desktop link to open the guide.

## 1.

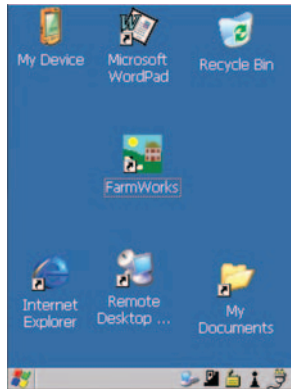
### Load your farm details

You cannot use your stock recorder until you have sent your farm details from FarmWorks on the computer to your stock recorder.

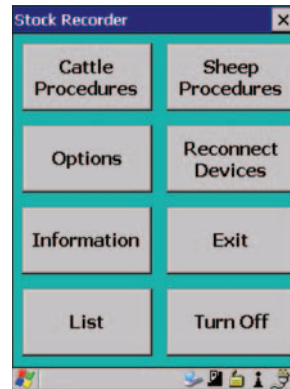
### Data Transfer - Send data to the stock recorder

- » Place the stock recorder firmly in the cradle, with the power and USB leads connected. See the stock recorder installation guide for more detail.
- » The stock recorder desktop must be visible, with FarmWorks closed.

Stock recorder desktop - FarmWorks closed



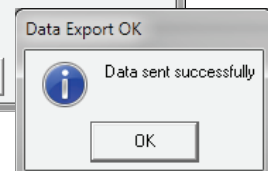
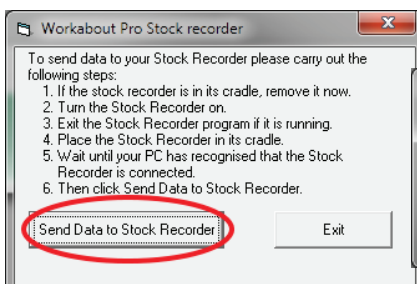
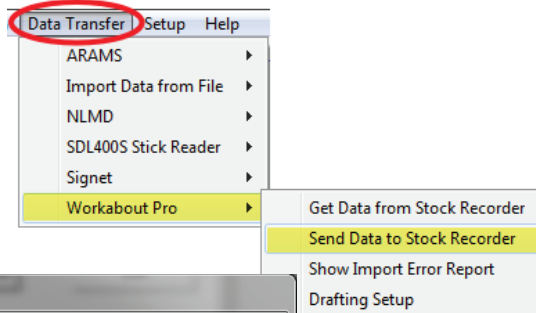
Stock recorder desktop - FarmWorks open



- » Open Windows Mobile Device Center on your computer. (Look for a green circle icon or use the search function. See the stock recorder installation guide for more help with this program.)



- » Look for the green tick to show the stock recorder is connected.
- » Open FarmWorks on your computer.
- » Go to **Data Transfer > Workabout Pro > Send Data to Stock Recorder**.
- » Click on **Send Data to Stock Recorder**
- » Note the warning message but carry on if this is the first time you are transferring data- click **OK**.
- » If your data was successfully transferred then your stock recorder is ready to use.





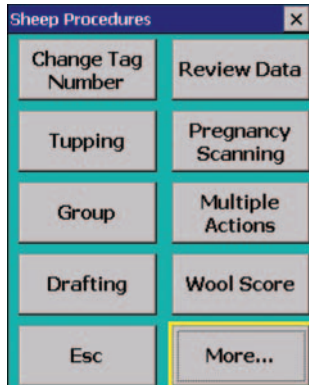
# Quick Start Guide - Stock Recorder

## 2.

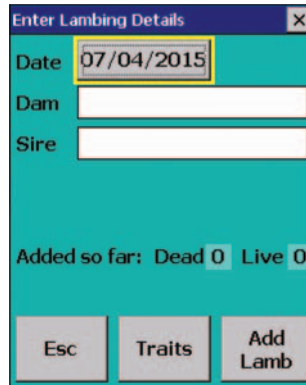
### Touchscreen

- » Double-tap the FarmWorks icon with the stylus or your finger to open the program.
- » Lightly tap with the stylus or your finger to select an item on the screen.
- » Move between procedure screens by tapping the **More...** button on the bottom right.
- » A yellow box is visible around any button or field that has been selected.
- » Change a date by tapping the Date button to select a new date from the calendar.

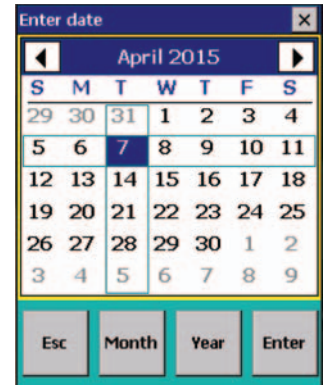
Yellow box around the More... button.



Yellow box around the date button.



Pick a new day, month or year, then tap Enter



## 3.

### Keyboard

You can enter information, including tag numbers, by typing on the stock recorder keyboard.

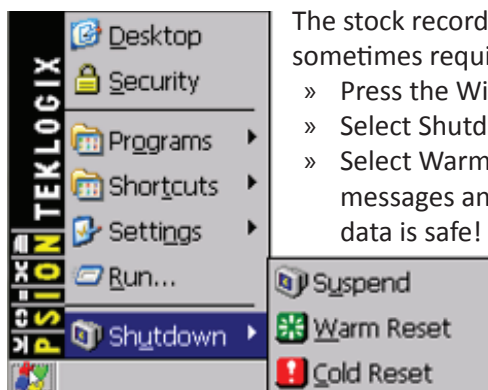
The stock recorder has a Windows keyboard:

- » Use the **Shift** key for uppercase letters.
- » Use the **Backspace** key to delete.
- » **Escape** takes you back one screen.



## 4.

### Resolving problems



The stock recorder is a handheld computer; closing it down and restarting is sometimes required.

- » Press the Windows key.
- » Select Shutdown.
- » Select Warm Reset to restart the stock recorder. This will clear any error messages and resolve minor problems. Don't worry - your FarmWorks data is safe!



# Quick Start Guide - Stock Recorder

## 5.

### Scanning EID tags

The stock recorder has two side buttons, one on the left and one on the right. The right-hand button is for reading EID tags; the button on the left is for looking up animal details.

- Think "Right to Read" tags and "Left to Look" at details.

To scan an EID tag, you must be on a tag field, in one of the procedures on the stock recorder.

#### Antennae



- » Check that the yellow box is around the tag field, and the cursor is blinking.
- » Press and release the right-side scan button.
- » A beeping sounds indicates the stock recorder is scanning for a tag.
- » Bring the stock recorder antennae close to the ear tag.
- » The EID number will be displayed.

Whenever a tag number is in a tag field, press and release the left-side button to look up animal details or type in comments.

Yellow box around the dam tag field.

Enter Lambing Details

Date 07/04/2015

Dam

Sire

Press and release the right-side scan button

EID number fills the dam tag field.

Enter Lambing Details

Date 07/04/2015

Dam UK0244220 18996

Sire

Right side button - for reading EID tags

## 6.

### Adding animals into FarmWorks

Sheep can be entered into FarmWorks by scanning their RFID tags with the stock recorder and entering their details.

- » Open the **Review Data** screen on the stock recorder.
- » Scan a sheep's EID tag. The Tag and Flock number will be displayed.
- » Press the **DOB** button to change the date of birth.
- » Press the **Sex** to select a gender.
- » Press the **Breed** button to select a breed. To see more breeds, select **Other**. To jump through the list faster, type the first letter of the sheep breed you're looking for. (S for Suffolk, T for Texel, etc.)
- » Press **Save** to finish. A new animal record has been created. Scan the next sheep.
- » These animal records will be added to FarmWorks when you Get Data from Stock Recorder at the next Data Transfer to the computer.

Sheep Procedures

Change Tag Number

Review Data

Tupping

Pregnancy Scanning

Group

Multiple Actions

Drafting

Wool Score

Esc

More...

Review Data

Tag

Flock

Count 1

Clear count

DOB

Sex

Breed

Dam

Sire

Esc

Configure Display

Enter Animal Details

Tag 15073

Flock UK0244220

DOB 01/03/2015

Sex Please select

Breed Please select

New SET tag - enter details

Esc

Save

Enter Animal Details

Tag 15073

Flock UK0244220

DOB 01/03/2012

Sex Ewe

Breed Suffolk X

Esc

Save



# Quick Start Guide - Stock Recorder

## 8.

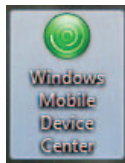
### Data Transfer - Get Data from Stock Recorder

The information you collect with the stock recorder must be transferred into FarmWorks. Make a habit of getting data from the stock recorder often, particularly during critical times like lambing.

#### Data Transfer - Get data from stock recorder

- » Place the stock recorder firmly in the cradle, with the power and USB leads connected. See the stock recorder installation guide for more detail.
- » The stock recorder desktop must be visible, with FarmWorks closed.

- » Open Windows Mobile Device Center on your computer.

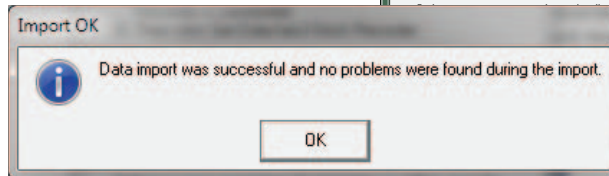
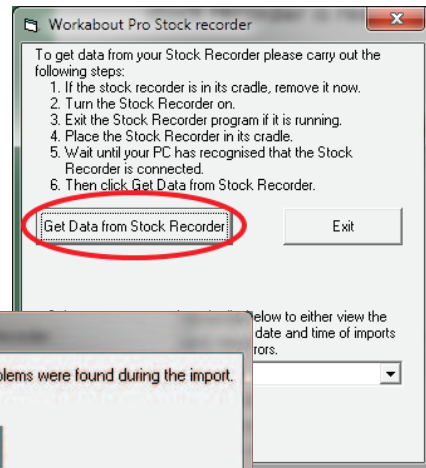
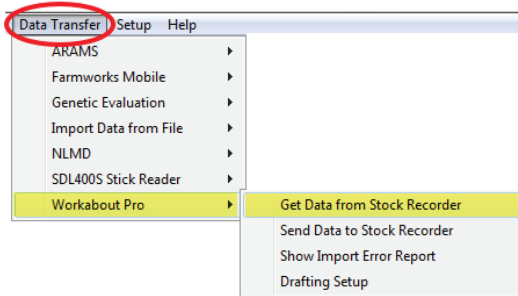


(Look for a green circle icon or use the search function. See the stock recorder installation guide for more help with this program.)



- » Look for the green tick to show the stock recorder is connected.

- » Open FarmWorks on your computer.
- » Go to **Data Transfer > Workabout Pro > Get Data from Stock Recorder**.
- » Click on **Get Data from Stock Recorder**.
- » A message confirms your data was successfully transferred.

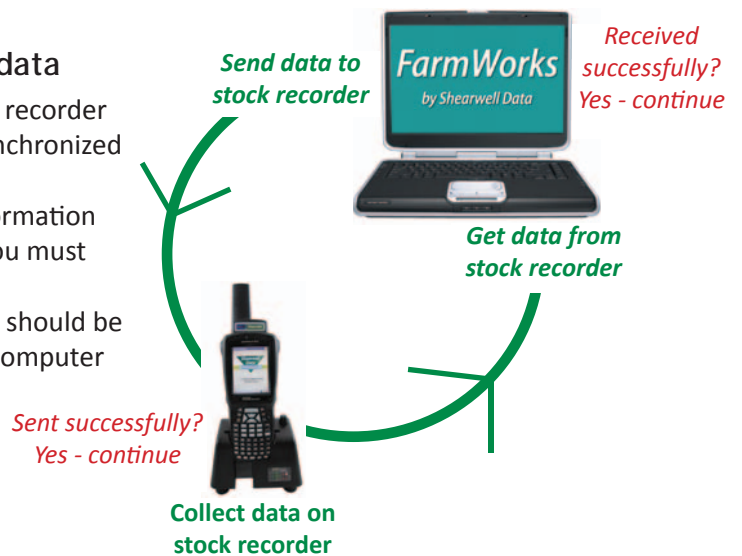


## 9.

### Synchronizing your FarmWorks data

It is critical that FarmWorks on the stock recorder and FarmWorks on the computer are synchronized regularly.

- » When you make changes or add information into FarmWorks on the computer, you must update the stock recorder.
- » Data collected on the stock recorder should be transferred into FarmWorks on the computer as soon as possible.



For technical support telephone: **+44 (0) 1643 841814**  
 Monday to Friday between 8am - 5pm GMT.  
 Email technical support at: **support@shearwell.co.uk**