



Application of the Shearwell TST Tag (flag or button)

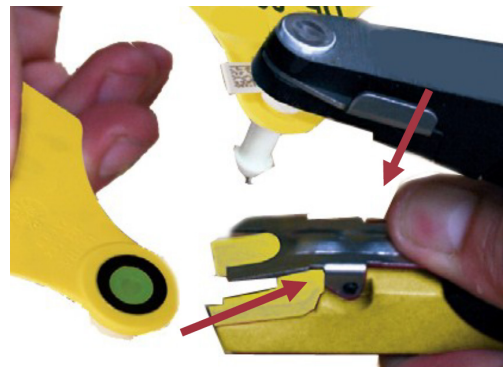


Important!

- *The metal tissue cutter must be kept clean to avoid contaminating the sample.*
- *Unused TST tags should be stored at room temperature.*
- *Unsealed samples will dry out and will not be able to be tested.*

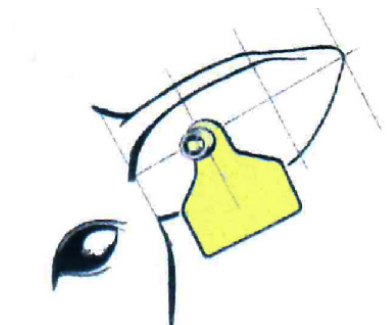
Load the applicator

1. Push the safety button on the side of the black jaw to insert the male tag.
2. Push the pedal down on the yellow jaw to allow placement of the female tag.



Applying the TST ear tag

3. Make sure the animal is unable to move during tagging.
4. As with all ear tags, always place the female part on the inside and the male part on the exterior side of the ear.
5. The tag should be inserted in the middle of the ear 1/3 from the head and 2/3 from the tip of the ear. Avoid piercing the ridges of cartilage.
6. When closing the pliers, use a firm and constant pressure.



You will hear two "clicks". Allow the pliers to open immediately after the second "click" is heard.

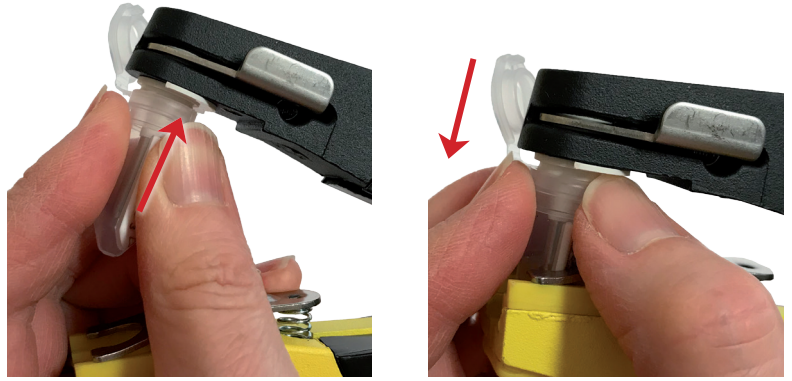
The ear tag will now be firmly attached to the ear, and the metal tube holding the tissue sample is retained in the applicator jaw after tagging is completed.



Preserve the sample

7. Undo the clip on the top of the plastic storage container (vial).

8. CAREFULLY BY HAND slide it over the metal sample tube. Push the vial firmly onto the needle, then guide the vial into the lower part of the jaw, as you close the applicator jaws together.

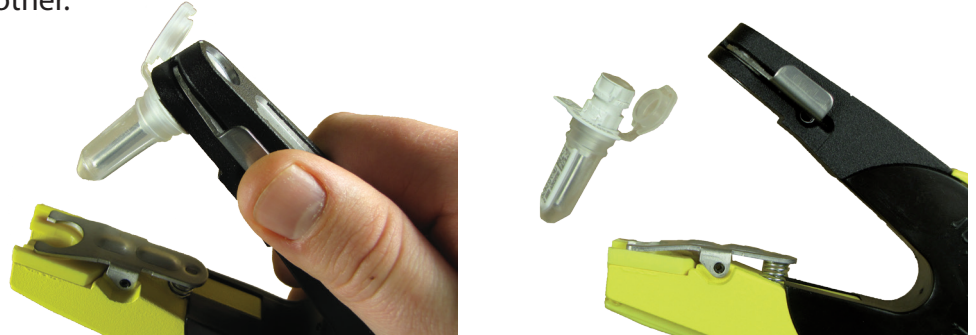


Press hard to attach the two parts together. Make sure you apply sufficient pressure until the vial “clicks” into place on the plastic at the base of the metal tube.



Make sure both pieces (vial and tube) are inseparably fixed to each other.

9. Check that the metal tube is firmly sealed in the vial. Then push on the safety button on the side of the jaws to release the finished sample.



10. Check again that the vial is closed. You may need to press together with your hands.

11. Send samples ASAP for testing to the laboratory using the returns form and envelopes we supply.

They must be received within 10 days of the sample being taken (do not freeze).



12. Best practice - after a week, check newly tagged animals and treat any inflamed wounds.

Important!

- Finished samples should be stored at room temperature or in a refrigerator. Do not freeze!
- Do NOT cut off the vial lid.
- Finished samples must be sent to the lab within 10 days.
- Overdue samples CANNOT be tested.
- Unsealed samples will dry out and will not be able to be tested.